

**MADE IN
GERMANY**

For more than 65 years



Lammers
Formen- und Maschinenbau GmbH & Co. KG

**WE ARE
SHAPING
YOUR
IDEAS**

Moulds for the
concrete block industry

EN





WE ARE SHAPING YOUR IDEAS

For more than 65 years, company Lammers is manufacturing different products at the company headquarters in Haren-Erika, in the northwest of Germany.

50 years ago, we specialized in mould construction for the concrete industry.

The continually growing know-how of our more than 50 high qualified employees and the deployment of the latest manufacturing technology enables us to meet the requirements relating to the mould construction together with individual customer wishes.

Our increasing base of customers is distributed worldwide which is proof for our close partnership with the concrete industry.

PAVING STONE MOULDS

- ✓ inlet made in one block with small tolerances
- ✓ special hardening up to 65 HRC; 1,2 mm deep
- ✓ tamper feet's screwed

options

- ✓ heating tamper shoes
- ✓ tamper shoes with rubber buffers
- ✓ pulling sheet
- ✓ dynamic inlet



FRAME TYPE LF Multi 2

- ✓ inlet with frame is screwed
- ✓ frame with mold pick up and rails welded

options

- ✓ changeable screwed top plates



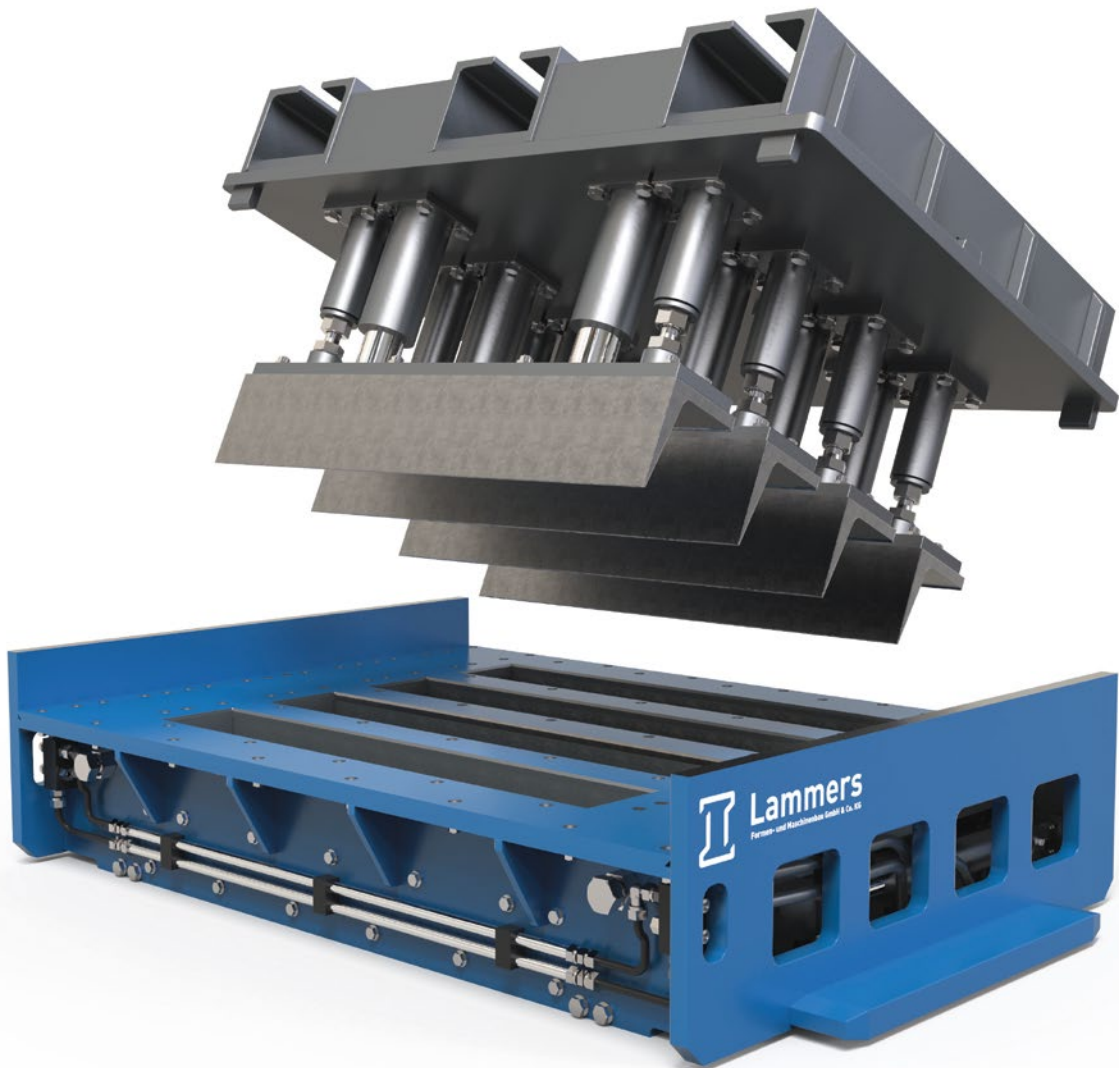
FRAME TYPE LF Type 3

- ✓ inlet with frame made in one block
- ✓ mold pick up and rail made as one screwable module
- ✓ changeable screwed top plates



Lammers
Formen- und Maschinenbau GmbH & Co. KG

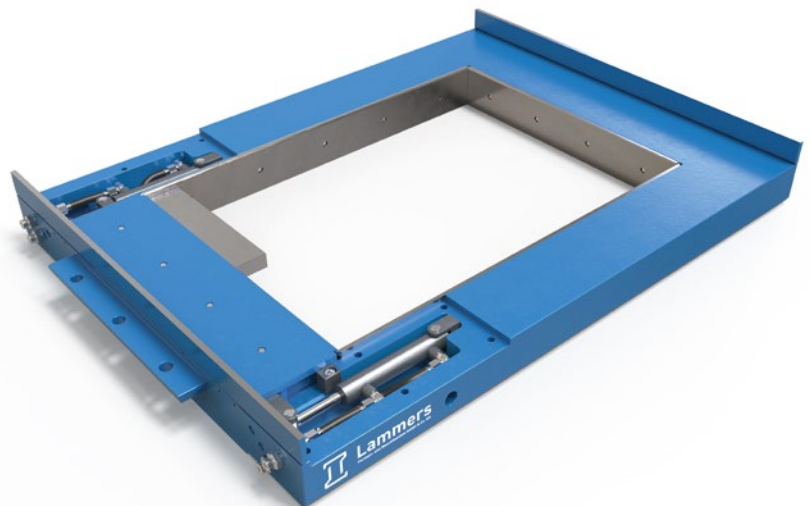
CURB- STONES



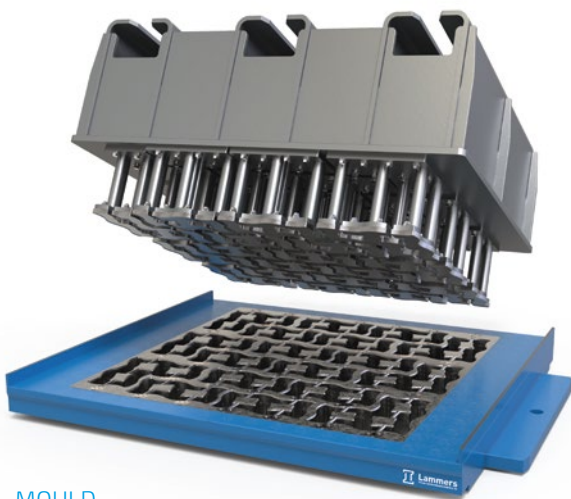
- ✓ inlet in module construction welded or screwable
- ✓ frame with mold pick up and rails as welded module
- ✓ screwed tamper feet

options

- ✓ pneumatic tamper compensation
- ✓ hydraulic displacement wall



MEBA AND HOLLOW BRICK MOULDS



MOULD
MEBA

- ✓ inlet made out of one block with minimal tolerances
- ✓ special hardening up to 65 HRC; 1,2 mm deep
- ✓ tamper feet screwed or welded
- ✓ cores and core bars in module construction welded or screwable

Options

- ✓ pulling sheet



MOULD
HOLLOW BRICK

- ✓ inlet in module construction welded or screwable
- ✓ frame with mold pick up and rails welded
- ✓ cores and core bars in module construction welded or screwable
- ✓ tamper feet screwed or welded



Lammers
Formen- und Maschinenbau GmbH & Co. KG

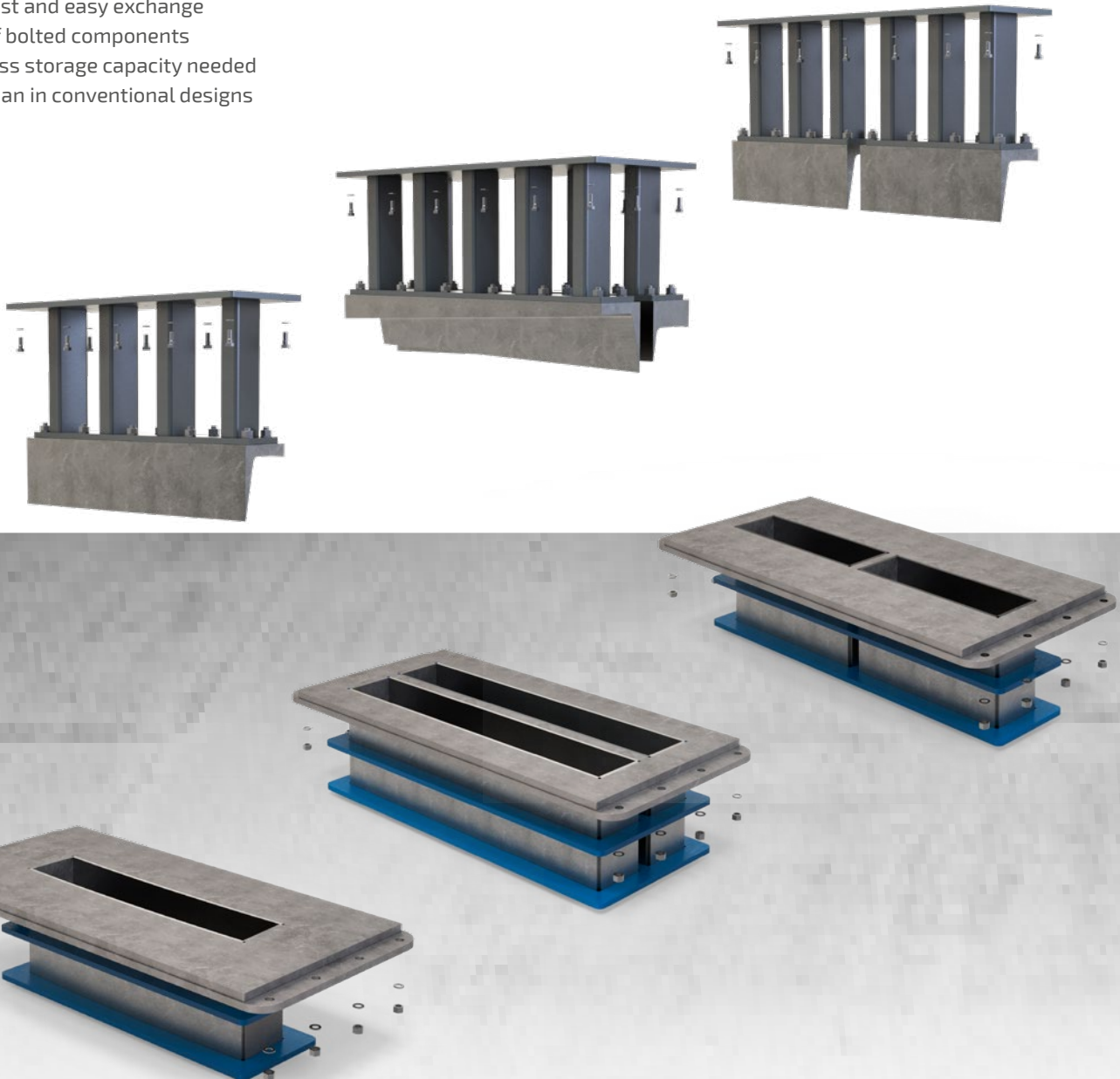


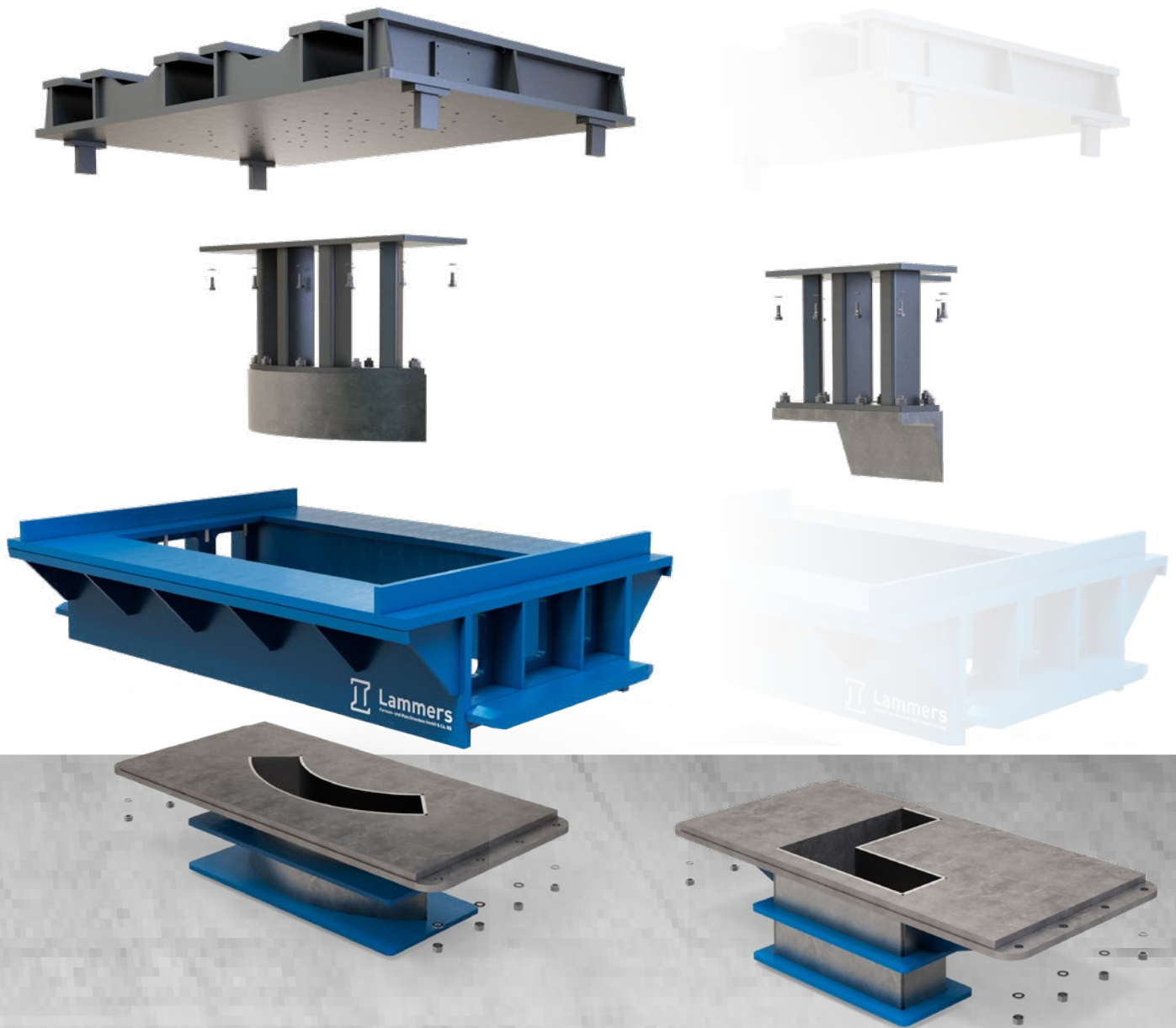
LAMMERS



CLEVER CHANGE

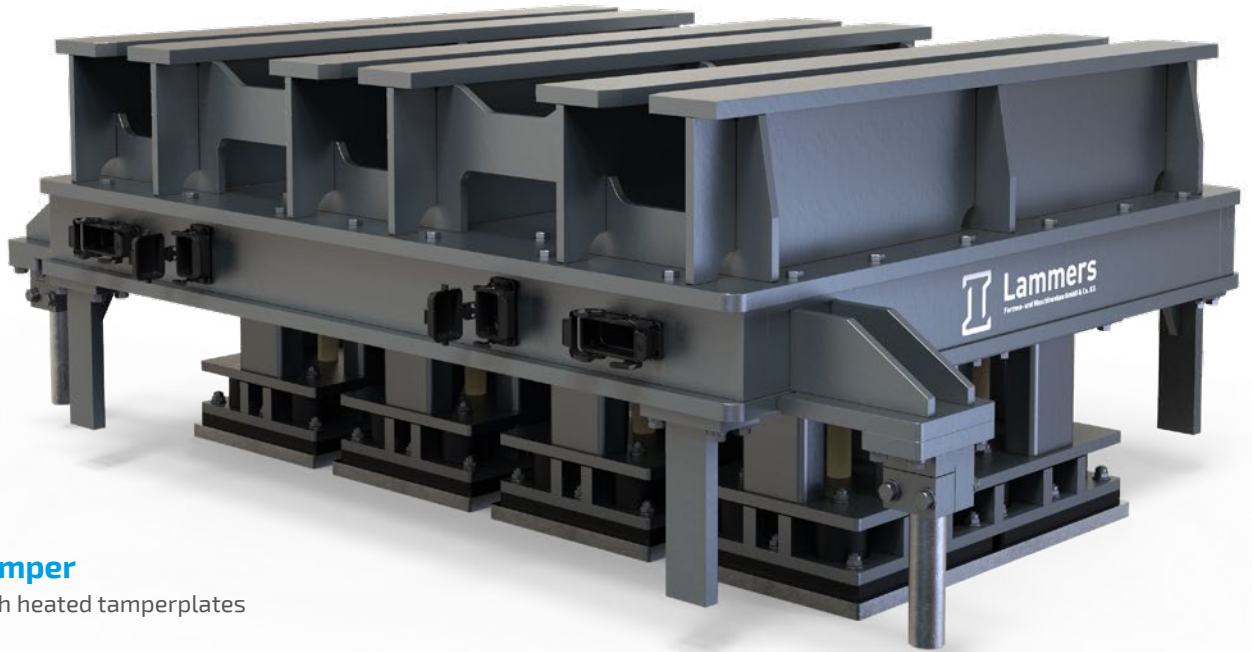
- ✓ system for infinite amount of forms
- ✓ modular design
- ✓ fast and easy exchange of bolted components
- ✓ less storage capacity needed than in conventional designs



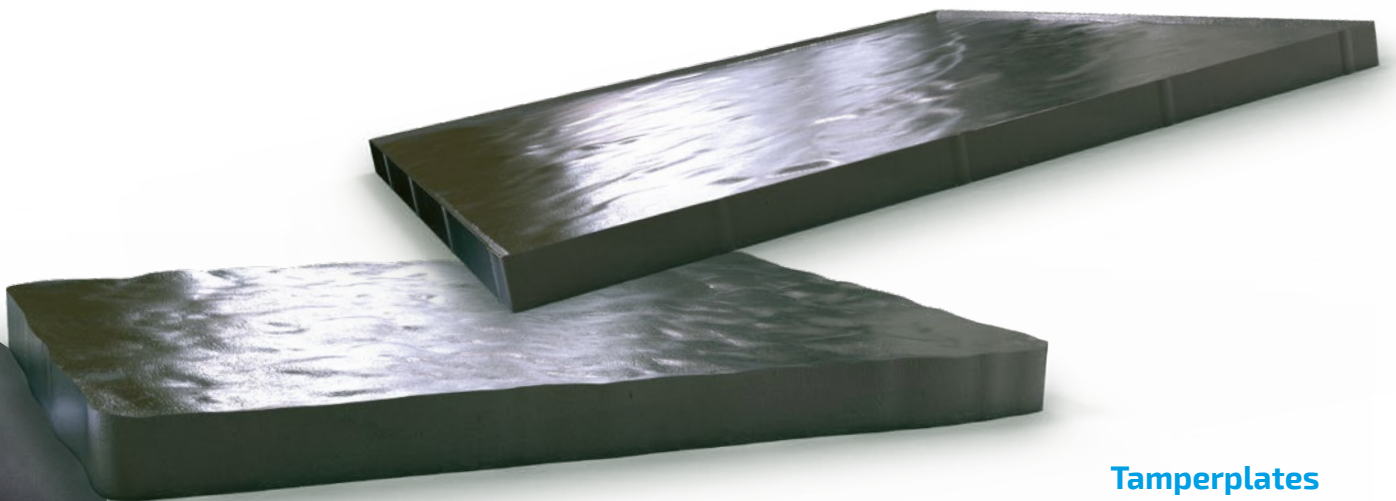




HOT!

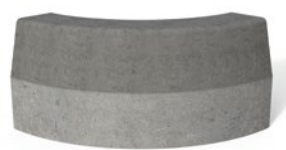


Tamper
with heated tamperplates



Tamperplates
with embossed surface

BEST IN SHAPE





Lammers
Formen- und Maschinenbau GmbH & Co. KG



BEST IN SHAPE

Moulds for the
concrete block industry



**LAMMERS Formen- und
Maschinenbau GmbH & Co.KG**

Oberlangener Straße 13-15
D-49733 Haren-Erika
Germany

PHONE +49(0)5934 9350-0
FAX +49(0)5934 9350-50
MAIL info@lammers-formenbau.de

We are shaping your ideas
www.lammers-formenbau.de

presented by



Josef Rath GmbH
Neudorf 74
A - 8424 Gabersdorf, Austria

Mobile: +43 664 5066559 - Josef Rath
Mobile: +43 664 3614055 - Milan Husnjak
E-mail: maria.gobly-heigl@m-p-s-rath.at

www.m-p-s-rath.at